

Revit Objects Description

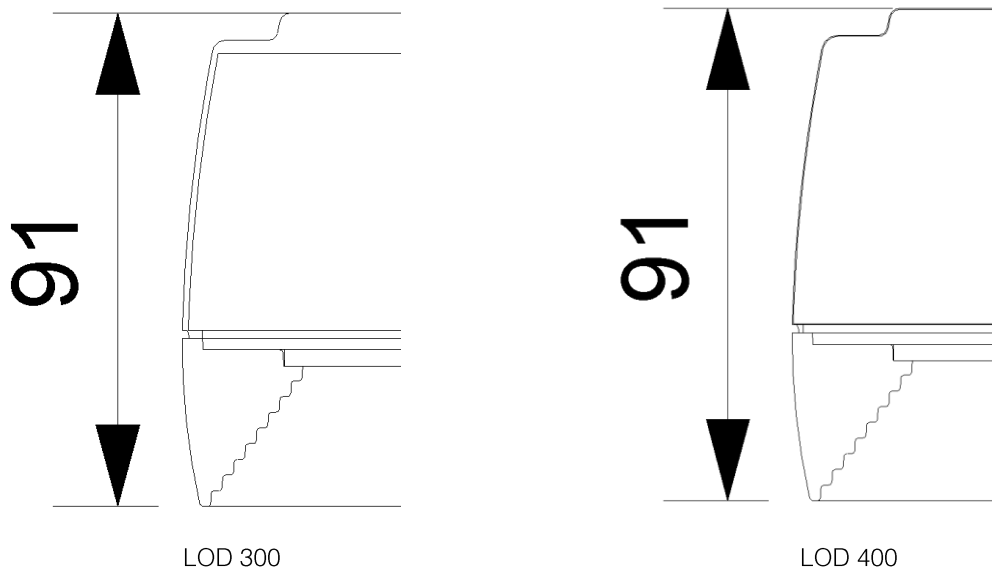
Focus Lighting - Pelée 385

Geometry - Pelée 385 (LOD 300)

- Nominal Width – 385 mm
- Nominal Height – 91 mm
- Precise outside geometry, Simplified inside geometry
- Suitable for Architects and Architectural Discipline Revit Models

Geometry - Pelée 385 (LOD 400)

- Nominal Width – 385 mm
- Nominal Height – 91 mm
- Precise outside and inside geometry (to the extend Revit allows)
- Suitable for more accurate Quantity Take Off, if this is needed



Light Source Definition

- Photometric Data (Pelée 385_17,4W_3000K.ltd converted in .ies file format)

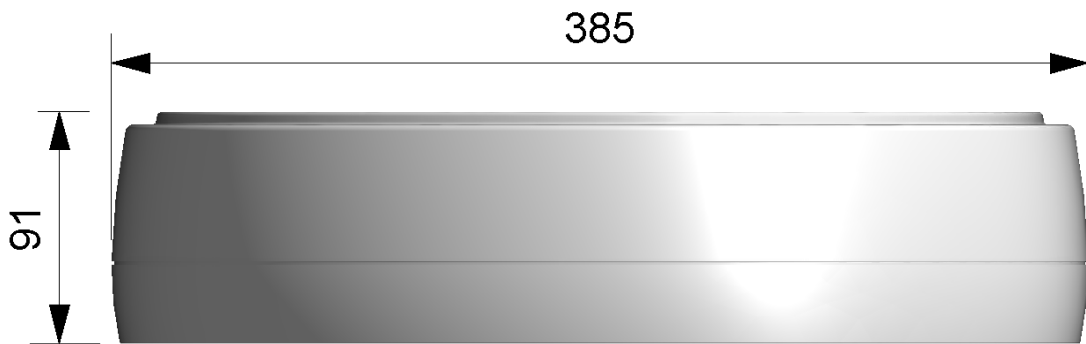
Electrical Connector (data is logically inserted)

Electrical Loads

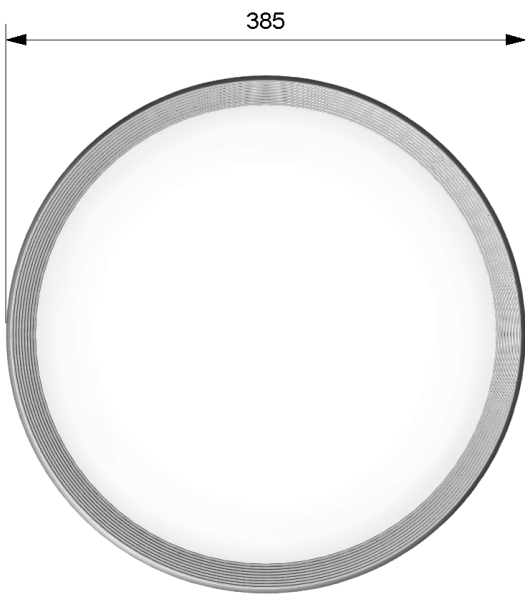
- System Type – Power – Unbalanced
- Number of Poles – 1
- Power Factor State – Lagging
- Load Classification – Lighting
- Load Sub-Classification Method – Unchecked
- Voltage – 230.00 V
- Apparent Load Phase 1 – 17.40 VA
- Power Factor – 0.950000



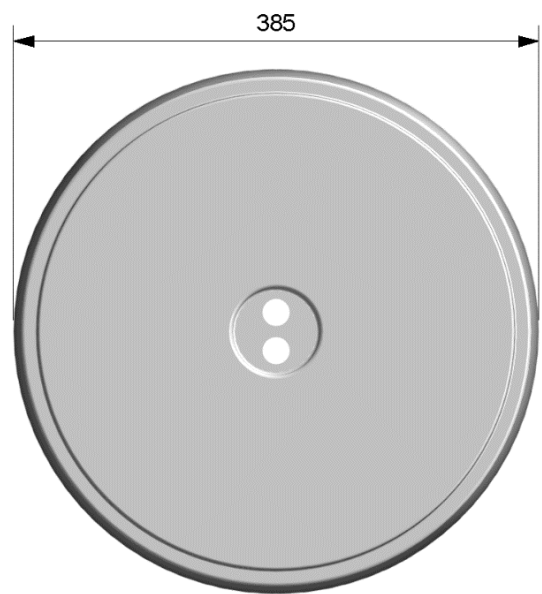
Perspective View



Side View



Bottom View



Top View

METADATA	
Identity Data	
Manufacturer	Focus Lighting A/S
URL	http://focus-lighting.dk/
Description	Pelée 385_17,4W_3000K
Product URL	
Product Certification	
Technical Description URL	
Installation Instructions URL	
Revit Modeler URL	http://www.newbim.info/
Product Group	Loft- & Indbygningsslamper
Product Family	Indoors
Date	05.03.2015
Model	Version 1
Cost	
Type Image	Perspective View 2.png
Keynote	
Type Comments	
Assembly Code	
Assembly Description	
Type Mark	
OmniClass Number	23.80.70.11
OmniClass Title	Luminaires for Internal Lighting
Materials and Finishes	
Diffuser Material	Glass, White, High Luminance
Material	Aluminum-Focus Lighting-Pelee 385-Semi-Polished
Data	
Light Sources	1

Light Sources Type	CLEg2-315-4000-830_500mA
CRI	80
Watt Total	17.4 W
Light Total Output Ratio	81.7 %
Light Downwards Output Ratio	81 %
Electrical	
Lamp	
Wattage Comments	
Electrical - Lighting	
Calculate Coefficient of Utilization (default)	X
Coefficient of Utilization (default)	
Electrical – Loads	
Apparent Load	
Dimensions	
Inbygningshøjde	-
Nominal Height	91 mm
Nominal Width	385 mm
Photometrics	
Light Loss Factor	1
Initial Intensity	1950.00 lm
Initial Color	3000 K
Dimming Lamp Color Temperature Shift	<None>
Color Filter	White
Photometric Web File	Pelèe 385_17,4W_3000K.ies
Tilt Angle	0.000
Light Source Definition (family)	Point+Photometric Web