

Square 270 - exterior

Design: schmidt hammer lassen design



With light slits at the top and bottom, Square offers a soft light without glaring. The downwards light is dominant due to the position of the lamps.

In case of interior use Square can be turned upside down, but when used outdoors the correct orientation is important due to drainage of moisture.

Square is also available with downward light only.

Characters and symbols can be cut out in the front, resulting in clear signage even at darkness.

Dimensions:

250x250 and 270x270 mm

Finish:

White RAL 9010, gloss 30

Black Noir 900 Sable or RAL 9005, gloss 30

Graphite grey YW355F

Corten brown YX355F

Brushed copper

Galvanised

Lamp types:

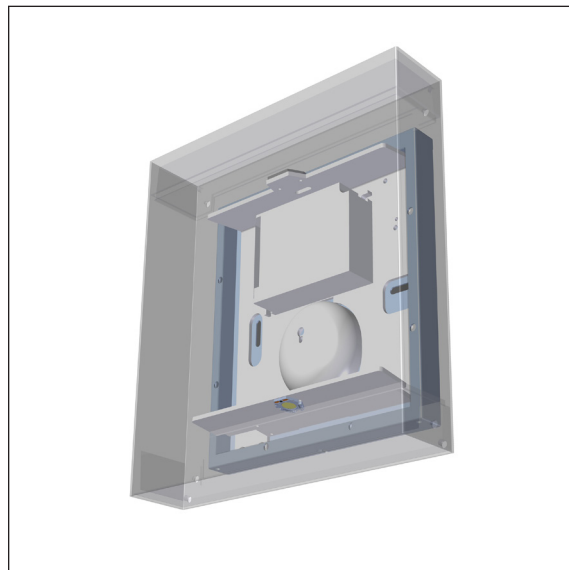
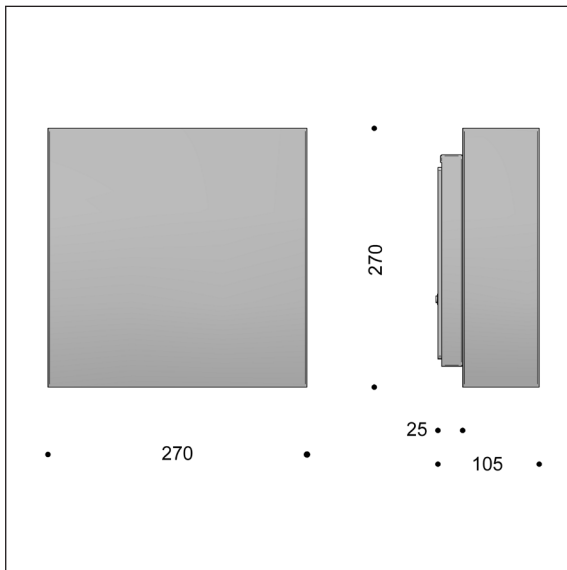
LED Bridgelux



FOCUS-LIGHTING

Square 270 - exterior - LED

Design: schmidt hammer lassen design



Luminaire specification:

Material:	Galvanised steel, coated stainless steel or copper
Finish:	Graphite grey: YW355F
	White: RAL 9010, shine 30
	Black: Noir 900 Sablé or RAL 9005, shine 30
	Corten brown: YX355F
Screen:	Polycarbonate, opalised
Cutting in front:	Digits can be cut out in the front. See specification below. Cuttings in galvanised units may have minor irregularities.
Mounting:	On wall or wall box
Connection:	Max two cables into 5 x 2,5 mm ² terminal block
Classification:	IP45, class I, class II optional, IK09
Weight:	2.5 kg

Lamp and driver specification:

LED type:	Bridgelux Vero 10 + V6
Total consumption:	15 or 20 W
Downwards only:	Bridgelux Vero 10
Total consumption:	12 W
Service life:	100,000 hours at t _a max 25°, L90B10
Colour temperature:	2700, 3000, or 4000 Kelvin
Energy eff. class:	F
Colour rendering:	min 90 Ra
Output ratio:	62 per cent
Driver:	20 W LED driver, dimming optional
Service life:	min 100,000 hours

Product codes:

SQUARE 270 with Bridgelux LED									
Item No.	Lamp type	Select colour, colour temperature, dimming, etc. in the table below.							
6824-	15 W Bridgelux, 350 mA								
6827-	20 W Bridgelux, 500 mA								
6825-	12 W Bridgelux, 350 mA, downwards only								
Combine with:	Colour	Colour temperature		Dimming		Class II		Laser cutting in front	
	1 white	927	2700 K, 90 Ra	V	1-10 V	empty	class I	empty	no cutting
	3 black RAL 9005	930	3000 K, 90 Ra	D	Dali	K	class II	C	digits in front
	4 graphite grey	940	4000 K, 90 Ra	R	bluetooth sensor				
	8 copper								
	9 galvanised								
	17 corten brown								
	66 black noir 900								
Example:	6824-66927D = Square 270, black noir 900, 15 W LED, 2700 K, 90 Ra, Dali								